

DynaMed[®]





DYNAMED

Dynamed est conçu pour fournir aux médecins et autres professionnels de santé

- Une information factuelle, pertinente et à jour
- Une mise à jour des meilleurs pratiques
- Une prise de décision rapide et sûre basée sur la preuve
- Une source fiable pour faire un état sur une question clinique

Des milliers de sujets et 39 spécialités couvertes

- Une surveillance systématique de la littérature médicale et scientifique
- Des informations uniquement basées sur des données probantes ([Evidence Based Medecine](#))
- Des Synthèses Cliniques incluant un résumé rapidement exploitable
- Des informations sur les diagnostics émis, les symptômes et contre-indications les plus fréquents
- Un accès par rubrique pour chaque sujet pour retrouver l'information nécessaire selon les besoins immédiats
- Une consultation des dernières lignes directrices publiées par les organismes de recommandations internationales



- **Des liens vers les informations sources telles que la documentation médicale et scientifique ou les organismes de recommandations internationaux**
- Plus de 7000 images et graphiques venant appuyer les meilleures preuves
- Des fiches sur les médicaments en relation avec chacune des synthèses (Evidence BasedMICROMEDEX®)



DynaMed - Type de contenus

- Condition
- Approche du patient
- Evaluation
- Gestion
- Tests de Laboratoires
- Epidémiologie
- Dispositifs thérapeutiques
- Préventions
- Interactions médicamenteuses
- Calculateurs
- Optimisation des soins

DynaMed – 1 accès simplifié

- Accès sur interface web
- Application Mobile

Une information plus claire sur le contenu nouvellement publié :

- Nouvelle preuve
- Nouvelle ligne directrice
- Nouveau médicament ou molécule approuvée par la FDA ou les autorités Européennes
- Nouvelle épidémie ou maladie infectieuse déclarée
- Nouveau changement potentiel dans la Pratique



DynaMed® a été classé numéro un en 2021 et 2022 dans la catégorie [« Best in KLAS : Software & Services for Clinical Decision Support – Point of Care Clinical Reference »](#)



DYNAMED

Contenu additionnel

- Clinician Practice Point : conseils et des avis de l'expert sur ce qui est perçu comme une bonne pratique clinique en l'absence de preuves solides.
- DynaMed Commentary : informations sur la méthodologie ou d'autres aspects techniques importants des études cliniques qui font l'objet d'une évaluation critique positive dans les recommandations
- Evidence Synopsis : un bref résumé structuré d'un ensemble d'éléments de preuve visant à fournir un " aperçu " clinique et à répondre à une question aussi rapidement que possible

Une Bibliothèque de contenu multimédia plus étendue

- Imagerie Médicale
- Des Modèles anatomiques 3D (Exemple : Proximal Humerus Fractures in Adults (www.dynamed.com/condition/proximal-humerus-fractures-in-adults/videos))
- Des vidéos complétant l'examen médical (Exemple : Cardiovascular Physical Exam in Adults (www.dynamed.com/evaluation/cardiovascular-physical-exam-in-adults/videos))

Intégration dans le Dossier Patient Informatisé

www.ebsco.com/clinical-decisions/dynamed-solutions/benefits/streamlined-workflow-integration

Participe à la Formation Médicale Continue

www.dynamed.com/cme-about




















DYNAMED – Disciplines

www.dynamed.com

Specialties

Browse and/or follow our collections of evidence-based topics. Read about our editorial team and our processes.

Allergy	 Follow	Immunology	 Follow	Otolaryngology	 Follow
Anesthesiology and Pain Management	 Follow	Infectious Diseases	 Follow	Palliative Care	 Follow
Cardiology	 Follow	Internal Medicine	 Follow	Pathology and Laboratory Medicine	 Follow
Critical Care	 Follow	Nephrology	 Follow	Pediatrics	 Follow
Dermatology	 Follow	Neurology	 Follow	Physical Medicine and Rehabilitation	 Follow
Emergency Medicine	 Follow	Neurosurgery	 Follow	Primary Care	 Follow
Endocrinology	 Follow	Obesity	 Follow	Psychiatry	 Follow
Family Medicine	 Follow	Obstetric Medicine	 Follow	Pulmonary Medicine	 Follow
Gastroenterology	 Follow	Occupational Medicine	 Follow	Radiology	 Follow
Geriatrics	 Follow	Oncology	 Follow	Rheumatology	 Follow
Gynecology	 Follow	Ophthalmology	 Follow	Sleep Medicine	 Follow
Hematology	 Follow	Oral Health	 Follow	Surgery	 Follow
Hospital Medicine	 Follow	Orthopedics and Sports Medicine	 Follow	Urology	 Follow



Recent Alerts

Follow your specialty and individual topics to personalize alerts.

All | Potentially Practice-Changing Only

Evidence • Updated 7 Mar 2023

addition of IMT to pulmonary rehabilitation may improve inspiratory muscle strength in patients with COPD, but not reduce dyspnea, or may increase exercise capacity or quality of life in patients with COPD (Cochrane Database Syst Rev 2023 Jan 6)

[View in Pulmonary Rehabilitation for COPD](#)

Evidence • Updated 7 Mar 2023

IMT may improve dyspnea, exercise capacity, and quality of life in patients with COPD (Cochrane Database Syst Rev 2023 Jan 6)

[View in Pulmonary Rehabilitation for COPD](#)

[Sign in to personalize your alerts. Don't have an account? \[Create account\]\(#\)](#)

Evidence • Updated 7 Mar 2023

digital monitoring of nebulizer might improve adherence to inhaled medications but might not reduce pulmonary exacerbations up to 1 year in adolescents and adults (Cochrane Database Syst Rev 2023 Feb 3)

[View in Cystic Fibrosis \(CF\)](#)

Evidence • Updated 7 Mar 2023

addition of single injection of evolocumab to standard treatment may decrease 30-day composite risk of death and need for intubation in adults hospitalized with severe COVID-19-associated pneumonia (J Am Coll Cardiol 2023 Jan 24)

[View in COVID-19 Management](#)

Evidence • Updated 6 Mar 2023

home-based transcranial direct current stimulation may reduce inattention symptoms in adults with ADHD without moderate to severe depression or anxiety (JAMA Psychiatry 2023 Sep 1)



CHU LIMOGES

Unlock personalized alerts and continuing education credits with a **free personal account**.

[Sign In](#)

[Create Account](#)

Your access courtesy of CHU LIMOGES

Announcements

DynaMedex™ New Mobile App Upgrades

Customize and track your areas of interest quickly and easily with our recent mobile app upgrades. [Learn more](#)

Upgraded Topic Page Experience

We have simplified the layout and navigation on our topic pages to help you get answers faster. [Watch a video about the upgrades on YouTube.](#)

DynaMed content has been accredited by Cebam and is now Cebam approved

This mark of distinction obtained from the Belgian Centre for Evidence-Based Medicine reflects the credibility of our practices, evidence-based processes, and content.

Specialties

Browse and follow our evidence-driven and continually updated topics by specialty.

[Browse Specialties](#)



www.dynamed.com

Vous êtes reconnu en tant que membre de votre Centre Hospitalier et pouvez débiter vos recherches. Il est également possible de se créer un compte personnel en cliquant sur le bouton Create Account.

Register for a Personal Account

Already have a personal account? [Sign in now](#)

Email Address

Password 

[Show Password](#)

Your Information

First Name

Last Name

Organization

Specialty

Role

Register

Le compte personnel permet de :

- Personnaliser l'interface
- Paramétrer ses alertes sur les disciplines ou sujets de son choix
- Visualiser en priorité les mise à jour sur les sujets suivis
- Télécharger l'application mobile DynaMed

DynaMed

[Specialties](#) [Drugs A-Z](#) [Drug Interactions](#) [Calculators](#) [Our Experts](#)

Mobile

The DynaMed app is free with every subscription and is compatible with iOS and Android devices.



[Learn more about how to install and authenticate the DynaMed app](#)



Recent Alerts

Follow your specialty and individual topics to personalize alerts. Manage followed content.

FOLLOWED ALL TOPICS



All | Potentially Practice-Changing Only

Outbreak Alert • Updated 10 Mar 2023

47,084 cases of scarlet fever and 2,178 cases of invasive group A streptococcal infection reported in the United Kingdom from September 12, 2022 to February 26, 2023 (United Kingdom Health Security Agency 2023 Mar 3)

View in Group A Streptococcus

Outbreak Alert • Updated 10 Mar 2023

3 cases of Murray Valley encephalitis, including 2 deaths, reported in Victoria, Australia, in 2023 as of March 5 (Victoria Department of Health 2023 Mar 5)

View in Arthropod Encephalitides

Outbreak Alert • Updated 10 Mar 2023

1 case of Murray Valley encephalitis reported in New South Wales, Australia, on February 22, 2023 (New South Wales Government News 2023 Feb 22)

View in Arthropod Encephalitides

Evidence • Updated 9 Mar 2023

in persons aged 50-70 years with positive FIT result, endoscopists with higher ADR associated with reduced risk of colorectal cancer \geq 6 months after colonoscopy (Ann Intern Med 2023 Feb 21 early online)

View in Stool Tests for Colorectal Cancer Screening

Evidence • Updated 8 Mar 2023

test-to-stay program reported to reduce missed school days by 89% in SARS-CoV-2-exposed students and staff in kindergarten-through-12th-grade schools in North Carolina, United States, compared to quarantine guidelines but reported to result in 1 additional school-acquired infection for every 21 exposed persons who were allowed to remain in school (Pediatrics 2022 Nov 1)

My Continuing Education

Sebastien Terrat

Available CME/CPD/CE Credits: 24.7

Claim Credits

Announcements

DynaMedex™ New Mobile App Upgrades

Customize and track your areas of interest quickly and easily with our recent mobile app upgrades. Learn more

Upgraded Topic Page Experience

We have simplified the layout and navigation on our topic pages to help you get answers faster. Watch a video about the upgrades on YouTube.

DynaMed content has been accredited by Cebam and is now Cebam approved

This mark of distinction obtained from the Belgian Centre for Evidence-Based Medicine reflects the credibility of our practices, evidence-based processes, and content.

Specialties

Browse and follow our evidence-driven and continually updated topics by specialty.

Browse Specialties



Une fois connecté vous pouvez visualiser les informations récentes sur les sujets favoris (**Followed Topics**) ou visualiser l'ensemble des mises à jour (**All Topics**)

DynaMed indique pour chaque alerte le type d'information à retenir (par exemple Potential Practice Changing)

DynaMed

ST CME 24.7

Specialties Recent Alerts Drugs A-Z Drug Interactions Calculators About

English Search

Zone libre de recherche

Recent Alerts

Follow your specialty and individual topics to personalize alerts. [Manage](#) followed content.

FOLLOWED ALL TOPICS

All | Potentially Practice-Changing Only

Outbreak Alert • Updated 10 Mar 2023

47,084 cases of scarlet fever and 2,178 cases of invasive group A streptococcal infection reported in the United Kingdom from September 12, 2022 to February 26, 2023 (United Kingdom Health Security Agency 2023 Mar 3)

[View in Group A Streptococcus](#)

My Continuing Education

Sebastien Terrat

Available CME/CPD/CE Credits: 24.7

[Claim Credits](#)

Announcements

[DynaMedex™ New Mobile App Upgrades](#)

DynaMed propose de nombreuses options de recherche.

- Recherche par **Disciplines**
- Recherche par **Alertes**
- Recherche par saisie de **mot-clés ou termes de recherche** dans la zone libre de recherche
- DynaMed est disponible en 15 langues

Specialties

Browse and/or follow our collections of evidence-based topics. Read about our editorial team and our processes.

Allergy	Follow	Immunology	Follow	Otolaryngology	Follow
Anesthesiology and Pain Management	Follow	Infectious Diseases	Follow	Palliative Care	Follow
Cardiology	Follow	Internal Medicine	Follow	Pathology and Laboratory Medicine	Follow
Critical Care	Follow	Nephrology	Follow	Pediatrics	Follow
Dermatology	Follow	Neurology	Follow	Physical Medicine and Rehabilitation	Follow
Emergency Medicine	Follow	Neurosurgery	Follow	Primary Care	Follow
Endocrinology	Follow	Obesity	Follow	Psychiatry	Follow
Family Medicine	Follow	Obstetric Medicine	Follow	Pulmonary Medicine	Follow
Gastroenterology	Follow	Occupational Medicine	Follow	Radiology	Follow
Geriatrics	Follow	Oncology	Follow	Rheumatology	Follow
Gynecology	Follow	Ophthalmology	Follow	Sleep Medicine	Follow
Hematology	Follow	Oral Health	Follow	Surgery	Follow
Hospital Medicine	Follow	Orthopedics and Sports Medicine	Follow	Urology	Follow

Pour effectuer une recherche par **Disciplines**, il suffit de cliquer sur **Specialties** pour identifier l'ensemble des sujets disponibles.

Vous pouvez également décider de suivre une discipline ou un sujet en cliquant sur l'icône **Follow**.

Recent Alerts

Filter by Category

<input type="checkbox"/> Adult Primary Care	<input type="checkbox"/> Nutrition
<input type="checkbox"/> Allergy	<input type="checkbox"/> Obesity
<input type="checkbox"/> Anesthesiology and Pain Management	<input type="checkbox"/> Obstetrics and Gynecology
<input type="checkbox"/> Cardiovascular Medicine	<input type="checkbox"/> Occupational and Environmental Medicine
<input type="checkbox"/> Complementary and Alternative Medicine	<input type="checkbox"/> Oncology
<input type="checkbox"/> Critical Care Medicine	<input type="checkbox"/> Ophthalmology
<input type="checkbox"/> Dermatology	<input type="checkbox"/> Oral and Maxillofacial Disorders
<input type="checkbox"/> Drugs	<input type="checkbox"/> Orthopedics and Sports Medicine
<input type="checkbox"/> Ear, Nose and Throat (ENT) Medicine	<input type="checkbox"/> Palliative Medicine
<input type="checkbox"/> Emergency Medicine	<input type="checkbox"/> Pathology and Laboratory Medicine
<input type="checkbox"/> Endocrinology	<input type="checkbox"/> Pediatrics
<input type="checkbox"/> Family Medicine	<input type="checkbox"/> Podiatry
<input type="checkbox"/> Gastroenterology	<input type="checkbox"/> Prevention and Screening
<input type="checkbox"/> Genetic Disorders	<input type="checkbox"/> Psychiatry
<input type="checkbox"/> Geriatric Medicine	<input type="checkbox"/> Pulmonary Medicine
<input type="checkbox"/> Hematology	<input type="checkbox"/> Quality Improvement
<input type="checkbox"/> Hospital Medicine	<input type="checkbox"/> Rheumatology
<input type="checkbox"/> Immunology	<input type="checkbox"/> Sleep Medicine
<input type="checkbox"/> Infectious Diseases	<input type="checkbox"/> Substance Use and Poisoning
<input type="checkbox"/> Nephrology	<input type="checkbox"/> Surgery
<input type="checkbox"/> Neurology	<input type="checkbox"/> Urology

Clear Apply

Guideline Summary • Updated 9 Mar 2023

National Comprehensive Cancer Network (NCCN) recommendations on HER-targeted therapy in early and locally advanced breast cancer (NCCN 2023 Mar)
[View in HER2 Targeted Therapy for Early and Locally Advanced Breast Cancer](#)

Evidence • Updated 9 Mar 2023

on for treatment of relapsed or refractory multiple myeloma in adults who have had ≥ 3 some inhibitor, and anti-CD38 antibody) and disease progression on last therapy (European port 2023 Jan 17)

tococcal infection reported in the United Kingdom from September 12, 2022 to February 26,

Victoria, Australia, in 2023 as of March 5 (Victoria Department of Health 2023 Mar 5)

tralia, on February 22, 2023 (New South Wales Government News 2023 Feb 22)

n chemotherapy for early and locally advanced breast cancer (NCCN 2023 Mar)

La Recherche par **Alertes** permet de sélectionner une ou plusieurs disciplines

English

Atrial



GO TO

- Atrial Fibrillation
- Atrial Fibrillation After Cardiac Surgery
- Atrial Fibrillation in Heart Failure
- Atrial Fibrillation Prevention
- Atrial Fibrillation Screening

SEARCH FOR

- atrial fibrillation
- atrial flutter
- atrial fibrillation with rapid ventricular response
- atrial fibrillation treatment
- atrial fib

Recent Alerts

Follow your specialty and individual topics to personalize alerts. [View all](#)

FOLLOWED **ALL TOPICS**

All | Potentially Practice-Changing Only

Drug/Device Alert • Updated 10 Mar 2023

ciltacabtagene autoleucl (Carvykti) authorized by European Commission for the treatment of multiple myeloma in adults who have had ≥ 3 prior lines of therapy (including anti-CD38 antibody) and disease progression on last therapy (EMA Public Assessment Report 2023 Jan 17)

[View in CAR T-cell Therapy](#)

Outbreak Alert • Updated 10 Mar 2023

47,084 cases of scarlet fever and 2,178 cases of invasive group A streptococcal infection reported in the United Kingdom from September 12, 2022 to February 26, 2023 (United Kingdom Health Security Agency 2023 Mar 3)

[View in Group A Streptococcus](#)

Outbreak Alert • Updated 10 Mar 2023

3 cases of Murray Valley encephalitis, including 2 deaths, reported in Victoria, Australia, in 2023 as of March 5 (Victoria Department of Health 2023 Mar 5)

[View in Arthropod Encephalitides](#)

Continuing Education

Continuing Education

Available CME/CPD/CE Credits: 24.7

[Claim Credits](#)

Alerts

Alerts

and track your areas of interest quickly and easily with our new mobile app upgrades. [Learn more](#)

Topic Page Experience

We have simplified the layout and navigation on our topic pages to help you get answers faster. [Watch a video about the upgrades on YouTube.](#)

DynaMed content has been accredited by Cebam and is now Cebam approved

This mark of distinction obtained from the Belgian Centre for Evidence-Based Medicine reflects the credibility of our practices, evidence-based processes, and content.

Vous pouvez saisir vos termes de recherche dans la boîte de recherche et cliquer sur la loupe. Vous pouvez également choisir les **sujets (GO TO)** ou les **termes de recherche (SEARCH FOR)** proposés automatiquement par DynaMed

atrial fibrillation

ALL (836)

IMAGES (11)

Narrow Results

CONTENT TYPE

- Approach To Patient (27)
- Condition (295)
- Device (2)
- Drug Monograph (300)
- Drug Review (24)
- Lab Monograph (5)
- Procedure (27)
- Quality Improvement (2)
- Other (154)



CALCULATOR

ORBIT Bleeding Risk Score in Atrial Fibrillation

[+ View More Calculator Results](#)

CONDITION

Atrial Fibrillation

It is a common arrhythmia caused by uncoordinated atrial activation and usually an irregular ventricular response.

MANAGEMENT

Thromboembolic Prophylaxis in Atrial Fibrillation

The risk of thromboembolism can be reduced by an appropriate use of antithrombotic therapy but at an increased risk of bleeding.

[Thromboembolism Epidemiology and Pathogenesis](#)

[Thromboembolism in atrial fibrillation moderate and minor risk factors](#)

MANAGEMENT

Ablation Therapy for Atrial Fibrillation

Ablation therapy for atrial fibrillation involves the placement of circumferential lesions within the atria and/or conduction system.

APPROACH TO PATIENT

New-Onset Atrial Fibrillation - Approach to the Patient

New-onset atrial fibrillation is newly diagnosed atrial fibrillation, regardless of the duration or presence and severity of symptoms.

[Management](#)

[In patients with postoperative atrial fibrillation](#)

Sur la page de résultats vous pourrez visualiser tous les résultats ou images ou affiner votre recherche en sélectionnant le type de contenu .

Si un calculateur est disponible en relation avec votre recherche il apparaîtra en haut de la page.

atrial fibrillation

ALL (836) IMAGES (11)

Were these results helpful?  

Narrow Results

CONTENT TYPE

- Approach To Patient (27)
- Condition (295)
- Device (2)
- Drug Monograph (300)
- Drug Review (24)
- Lab Monograph (5)
- Procedure (27)
- Quality Improvement (2)
- Other (154)



CALCULATOR

ORBIT Bleeding Risk Score in Atrial Fibrillation

[+ View More Calculator Results](#)

CONDITION

Atrial Fibrillation

It is a common arrhythmia caused by uncoordinated atrial activation and usually an irregular ventricular response.

MANAGEMENT

Thromboembolic Prophylaxis in Atrial Fibrillation

The risk of thromboembolism can be reduced by an appropriate use of antithrombotic therapy but at an increased risk of bleeding.

Thromboembolism Epidemiology and Pathogenesis

Thromboembolism in atrial fibrillation moderate and minor risk factors

MANAGEMENT

Ablation Therapy for Atrial Fibrillation

Ablation therapy for atrial fibrillation involves the placement of circumferential lesions within the atria and/or conduction system.

APPROACH TO PATIENT

New-Onset Atrial Fibrillation - Approach to the Patient


New-onset atrial fibrillation is newly diagnosed atrial fibrillation, regardless of the duration or presence and severity of symptoms.

Management

In patients with postoperative atrial fibrillation



- Overview and Recommendations
- Related Topics
- General Information
- Epidemiology
- Etiology and Pathogenesis
- History and Physical
- Diagnosis
- Management
- Complications and Prognosis
- Prevention and Screening
- Quality Improvement
- Guidelines and Resources
- Patient Information
- References

Vous pouvez également décider de vous rendre directement dans une section d'un sujet en cliquant sur l'icone 

Atrial Fibrillation

TOPIC

IMAGES (5)

UPDATES



SECTIONS:

Overview and Recommendations

Related Topics

General Information

Epidemiology

Etiology and Pathogenesis

History and Physical

Diagnosis

Management

Complications and Prognosis

Prevention and Screening

Quality Improvement

Guidelines and Resources

Patient Information

References

< Previous Section Next Section >

Overview and Recommendations

☰ In this Section

Background

- **Atrial fibrillation (AF)** is a common supraventricular tachyarrhythmia caused by uncoordinated atrial activation and associated with an irregularly irregular ventricular response.
- Causes of atrial fibrillation include an underlying structural heart disease, metabolic disorders, endocrine diseases, and certain medications.
- The **prevalence of AF** is approximately 1%-2% in the general population of developed countries.
- **Definitions of AF:**
 - **Paroxysmal AF** is recurrent atrial fibrillation that terminates spontaneously, lasting possibly up to 7 days, but usually < 48 hours.
 - **Persistent AF** is atrial fibrillation that is sustained > 7 days, but < 1 year.
 - **Longstanding persistent AF** is atrial fibrillation that is persistent for > 1 year, and in which management of rhythm is being actively pursued.
 - **Permanent AF** refers to atrial fibrillation where the patient and physician agree to stop additional attempts to restore normal sinus rhythm because atrial fibrillation cannot be converted anymore.
 - **Lone AF** was used to describe paroxysmal, persistent, or permanent atrial fibrillation in younger patients (such as patients < 65 years old) with no clinical history or echocardiographic evidence of cardiovascular disease, but the term has been abandoned due to its imprecision and lacking a standard definition.
- Patients with AF are at a significantly increased risk of heart failure and thromboembolism and, in particular, stroke.

Evaluation

- Suspect a diagnosis of atrial fibrillation (AF) on a **physical exam** when an irregularly irregular heart rhythm is detected by the palpation of a pulse or the auscultation of heart sounds.
- Obtain an electrocardiogram (ECG) to establish the **diagnosis**. Characteristic findings include:
 - rapid oscillatory ('fibrillatory') baseline waves varying in amplitude, shape, and timing
 - absence of P waves
 - irregularly irregular ventricular response
- An **ambulatory electrocardiogram** (Holter monitor, event monitor, loop monitor) may be needed to

TOPIC EDITOR
Panagiotis Papageorgiou MD, PhD

RECOMMENDATIONS EDITOR
Amir Qaseem MD, PhD, MHA, FACP

DEPUTY EDITOR
Peter Oettgen MD

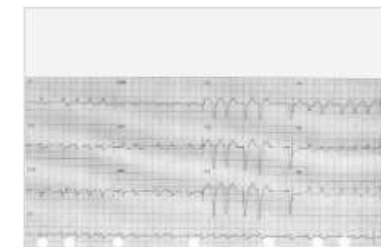
ACP REVIEWER
Jason G. Andrade MD, FRCPC, FHRS

Produced in collaboration with American College of Physicians



Images

All (5)



Atrial fibrillation



Lorsque vous consultez une fiche vous pouvez utiliser le menu de navigation à gauche de l'écran pour aller directement dans la section recherché, accéder aux images, visualiser les dernières alertes ou obtenir des information sur les rédacteurs.

SECTIONS:

- Overview and Recommendations
- Related Topics
- General Information
- Epidemiology
- Etiology and Pathogenesis
- History and Physical
- Diagnosis
- Management
- Complications and Prognosis
- Prevention and Screening**
- Quality Improvement
- Guidelines and Resources
- Patient Information
- References

Details ^

- based on nonclinical outcomes from systematic review
- systematic review of 15 randomized trials evaluating sotalol for prevention of supraventricular tachyarrhythmia after cardiac surgery
- no assessment of trial quality reported
- sotalol associated with reduced incidence of postoperative supraventricular tachyarrhythmias compared to
 - placebo in analysis of 5 trials with 988 patients
 - relative risk (RR) 0.55 (95% CI 0.45-0.67)
 - NNT 4-6 with supraventricular tachyarrhythmias in 51.5% for placebo group
 - beta blockers in analysis of 5 trials with 1,043 patients
 - RR 0.64 (95% CI 0.49-0.84)
 - NNT 9-28 with supraventricular tachyarrhythmias in 23% for beta blocker group
 - no treatment in analysis of 6 trials with 615 patients
 - RR 0.33 (95% CI 0.24-0.46)
 - NNT 4-5 with supraventricular tachyarrhythmias in 39% for controls
- no significant differences in postoperative supraventricular tachyarrhythmias comparing sotalol to
 - amiodarone in analysis of 2 trials with 285 patients
 - magnesium in 1 trial with 105 patients

6 / 9

^
▼
✕

Pour rechercher des termes spécifiques dans un sujet, vous pouvez saisir ces termes dans **Find on Page** en bas de l'écran. Ceux-ci seront indiqués en surbrillance et vous pourrez vous déplacer dans la page en utilisant **les flèches en bas de l'écran**.

Atrial Fibrillation

TOPIC IMAGES (5) UPDATES



SECTIONS:

Overview and Recommendations

Related Topics

General Information

Epidemiology

Etiology and Pathogenesis

History and Physical

Diagnosis

Management

Complications and Prognosis

Prevention and Screening

Quality Improvement

Guidelines and Resources

Patient Information

References

Overview and Recommendations

In this Section

Background

- **Atrial fibrillation (AF)** is a common supraventricular tachyarrhythmia caused by uncoordinated atrial activation and associated with an irregularly irregular ventricular response.
- Causes of atrial fibrillation include an underlying structural heart disease, metabolic disorders, endocrine diseases, and certain medications.
- The **prevalence of AF** is approximately 1%-2% in the general population of developed countries.
- **Definitions of AF:**
 - Paroxysmal AF is recurrent atrial fibrillation that terminates spontaneously, lasting possibly up to 7 days, but usually < 48 hours.
 - Persistent AF is atrial fibrillation that is sustained > 7 days, but < 1 year.
 - Longstanding persistent AF is atrial fibrillation that is persistent for > 1 year, and in which management of rhythm is being actively pursued.
 - Permanent AF refers to atrial fibrillation where the patient and physician agree to stop additional attempts to restore normal sinus rhythm because atrial fibrillation cannot be converted anymore.
 - Lone AF was used to describe paroxysmal, persistent, or permanent atrial fibrillation in younger patients (such as patients < 65 years old) with no clinical history or echocardiographic evidence of cardiovascular disease, but the term has been abandoned due to its imprecision and lacking a standard definition.
- Patients with AF are at a significantly increased risk of heart failure and thromboembolism and, in particular, stroke.

Evaluation

- Suspect a diagnosis of atrial fibrillation (AF) on a **physical exam** when an irregularly irregular heart rhythm is detected by the palpation of a pulse or the auscultation of heart sounds.
- Obtain an electrocardiogram (ECG) to establish the **diagnosis**. Characteristic findings include:
 - rapid oscillatory ('fibrillatory') baseline waves varying in amplitude, shape, and timing
 - absence of P waves
 - irregularly irregular ventricular response
- An **ambulatory electrocardiogram** (Holter monitor, event monitor, loop monitor) may be needed to

< Previous Section Next Section >

TOPIC EDITOR
Panagiotis Papageorgiou MD, PhD

RECOMMENDATIONS EDITOR
Amir Qaseem MD, PhD, MHA, FACP

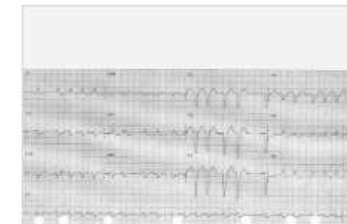
DEPUTY EDITOR
Peter Oettgen MD

ACP REVIEWER
Jason G. Andrade MD, FRCPC, FHRS

Produced in collaboration with American College of Physicians



Images All (5)



Atrial fibrillation

Pour chaque fiche, vous pouvez utiliser les fonctionnalités **Imprimer** (en sélectionnant certaines sections uniquement) **Suivre le Sujet**, **Citer** ou **Partager la fiche** avec les membres de vos équipes ou d'autres collègues.

The screenshot shows the DynaMed website interface. At the top, there is a navigation bar with 'Specialties', 'Recent Alerts', 'Drugs A-Z', 'Drug Interactions', 'Calculators', and 'About'. The main content area is titled 'Atrial Fibrillation' and includes a 'TOPIC' tab, 'IMAGES (5)', and 'UPDATES'. A 'Follow' dialog box is overlaid on the page, with a red circle highlighting the 'Follow' icon in the top right corner of the article area. The dialog box contains the following text: 'Follow', 'Get alerts when there are significant updates to this content.', 'Select:', and three radio button options: 'All Email Alerts', 'Only Potentially Practice-Changing Email Alerts', and 'No email, please. Just show me alerts on DynaMed.'. The dialog box also has 'Follow' and 'Cancel' buttons at the bottom.

Pour Suivre un Sujet, il suffit de cliquer sur l'icone **Follow** et sélectionner les différentes options.
Alertes sur chaque modification dans le sujet,
Alertes uniquement en cas de Modification Eventuelle dans la Pratique ou **Uniquement des Alertes sur la page d'accueil** (lorsque vous vous connectez via votre Profil Personnel)

Recent Alerts

Follow your specialty and individual topics to personalize alerts. **Manage** followed content.



FOLLOWED ALL TOPICS

All | Potentially Practice-Changing Only

Outbreak Alert • Updated 10 Mar 2023

47,084 cases of scarlet fever and 2,178 cases of invasive group A streptococcal infection reported in the United Kingdom from September 12, 2022 to February 26, 2023 (United Kingdom Health Security Agency 2023 Mar 3)

View in Group A Streptococcus

Outbreak Alert • Updated 10 Mar 2023

3 cases of Murray Valley encephalitis, including 2 deaths, reported in Victoria, Australia, in 2023 as of March 5 (Vict Department of Health 2023 Mar 5)

View in Arthropod Encephalitides

Outbreak Alert • Updated 10 Mar 2023

1 case of Murray Valley encephalitis reported in New South Wales, Australia, on February 22, 2023 (New South Wales Government News 2023 Feb 22)

View in Arthropod Encephalitides

Evidence • Updated 9 Mar 2023

in persons aged 50-70 years with positive FIT result, endoscopists with higher ADR associated with reduced risk of colorectal cancer \geq 6 months after colonoscopy (Ann Intern Med 2023 Feb 21 early online)

View in Stool Tests for Colorectal Cancer Screening

Evidence • Updated 8 Mar 2023

test-to-stay program reported to reduce missed school days by 89% in SARS-CoV-2-exposed students and staff in kindergarten-through-12th-grade schools in North Carolina, United States, compared to quarantine guidelines but reported to result in 1 additional school-acquired infection for every 21 exposed persons who were allowed to remain in school (Pediatrics 2022 Nov 1)

View in COVID-19 Infection and Control

My Continued Education

My Followed Content



DISEASE/CONDITION	Preterm Premature Rupture of Membranes (PPROM)	
MANAGEMENT	Endovascular Therapy for Acute Stroke	
PREVENTION	Dietary Considerations for Cardiovascular Disease Risk Reduction	
DISEASE/CONDITION	Deep Vein Thrombosis (DVT)	
MANAGEMENT	Pulmonary Embolism Treatment	
DISEASE/CONDITION	Hypopituitarism	
DISEASE/CONDITION	Ebola Virus Disease	
DISEASE/CONDITION	Eastern Equine Encephalitis	
DISEASE/CONDITION	COVID-19 and Pediatric Patients	
MANAGEMENT	Antiplatelet and Anticoagulant Drugs for Acute Coronary Syndromes	

Browse Specialties



Pour **Gérer vos Alertes**, vous pouvez cliquer sur le lien **Manage** dans la section **Recent Alerts** ou cliquer sur **My Followed Content**. A partir de cette nouvelle page vous pourrez supprimer certaines alertes.

Evidence • Updated 7 Mar 2023

digital monitoring of nebulizer might improve adherence to inhaled medications but might not reduce pulmonary exacerbations up to 1 year in adolescents and adults (Cochrane Database Syst Rev 2023 Feb 3)

[View in Cystic Fibrosis \(CF\)](#)

Evidence • Updated 7 Mar 2023

addition of single injection of evolocumab to standard treatment may decrease 30-day composite risk of death and need for intubation in adults hospitalized with severe COVID-19-associated pneumonia (J Am Coll Cardiol 2023 Jan 24)

[View in COVID-19 Management](#)

Evidence • Updated 7 Mar 2023

long-lasting insecticidal nets with chlorfenapyr plus alpha-cypermethrin, but not with pyriproxyfen plus alpha-cypermethrin, may reduce risk of malaria compared to LLIN with alpha-cypermethrin alone in children aged 6 months to 9 years in area of high pyrethroid resistance in central Benin (Lancet 2023 Feb 11)

[View in Mosquito Avoidance](#)

[View All Alerts](#)

[About DynaMed](#)

[Mobile](#)

[System Check](#)

[Help](#)

[Privacy Policy](#)

[Terms of Use](#)

[Copyright](#)

EBSCO

A tout moment vous pouvez cliquer sur le lien **Help** pour accéder à la section Aide et au Guide Utilisateur DynaMed.



AIDE ET ASSISTANCE

Section Aide sur DynaMed

Tutoriel vidéo DynaMed

<https://www.youtube.com/watch?v=nQIV4kHRbHE>

Centre de ressources et aide EBSCO

https://connect.ebsco.com/s/topic/0TO1H000000HHfAWAW/dynamed?language=en_US

Dynamed – Création d'un compte personnel

<https://www.youtube.com/watch?v=0-yxbBrupNA>

DynaMed Mobile App – Tutoriel

https://connect.ebsco.com/s/article/DynaMed-Mobile-App-Tutorial?language=en_US

Téléchargement application mobile

https://connect.ebsco.com/s/article/How-do-I-install-and-authenticate-the-DynaMed-app-on-my-mobile-device?language=en_US

Informations DynaMed et nos solutions d'aide à la décision

www.ebsco.com/clinical-decisions/dynamed-solutions/about



CONTACTS EBSCO

EBSCO INFORMATION SERVICES

Immeuble le Pélican – 3 Avenue Jeanne Garnerin

91321 Wissous - France

www.ebsco.com/health-care

Gilles Garnodier

Responsable Régional

ggarnodier@ebsco.com

Mob : +33 (0)6 07 10 64 63

Cécile Kellal

Chargée de compte

ckellal@ebsco.com

Tel : + 33 1 40 96 46 22

Support Europe

eurosupport@ebsco.com